

Historical Clippings

Three Lakes Museum

May 2023

To Curate -

the act of selecting and organizing information and objects for display

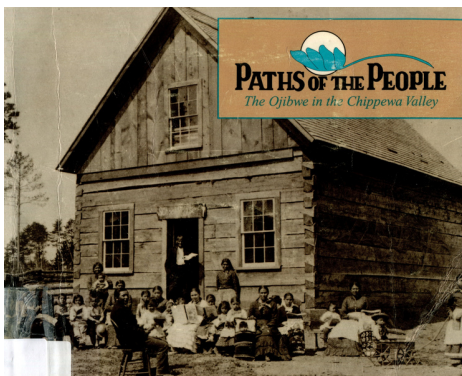
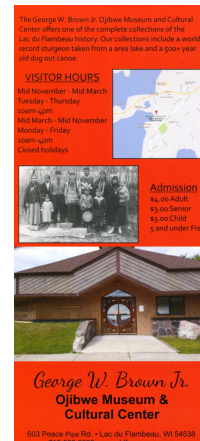
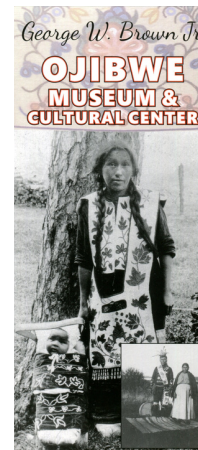
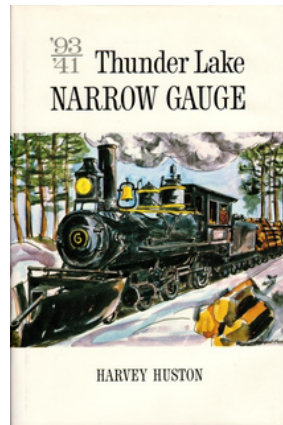
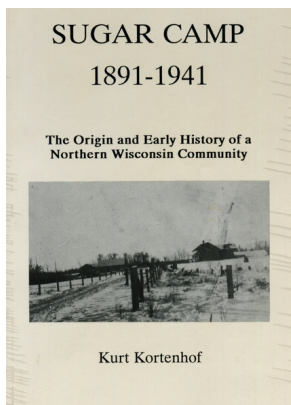
For a museum, the definition goes beyond just displaying objects. Museums must use those objects and conduct research to be able to tell the stories to educate the public. This provides people the opportunity to interpret the past and understand our place in its future, respecting different times and cultures.

This year Three Lakes Museum visitors will be able to see curation in progress as the Native American exhibit in the CCC Building undergoes the updating process of revamp, refresh, recycle and replace.



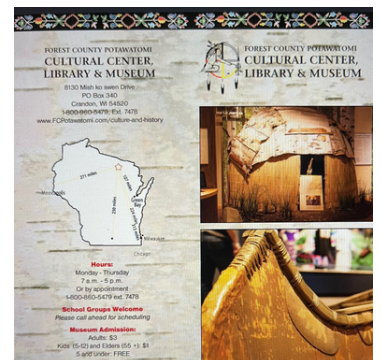
The purpose of exhibits is to engage the viewer visually. While the current exhibit has a great setting and a variety of artifacts, it doesn't tell the story of the native people living both to the east and west of Three Lakes prior to 1881. Books written on native tribes in Wisconsin provide general insight but the goal is to touch history here.

By connecting with local authors and the tribes themselves, a more detailed story emerges.



These are all great local sources

Both museums provide insight and knowledge and staff to answer questions





Maps are a visual communication. A graphic representation of information

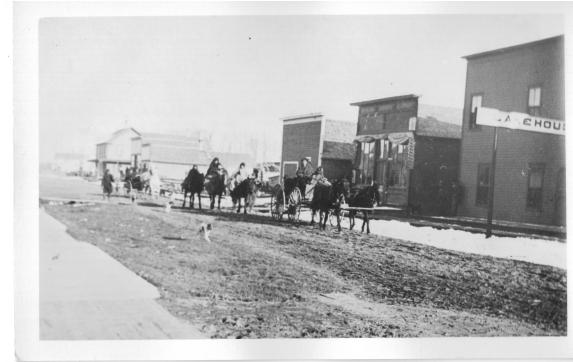
Archive images are limited to these - mostly traveling postcard photographers. As always the museum staff is looking for input from the community to fill in puzzle pieces of the past. If you have anything to share please contact us



Neu's Store (currently the Pharmacy and Fika). The little girl on the far left in the white dress is identified as Violet Neu Olkowski. Can you identify anyone else?



Agnes Buckskin



Main Street (before Superior) walking west past Campbell's store. Identified by George Campbell



John Shopodock.
Potawatomi.



Unidentified images that need to be confirmed as from the Three Lakes area